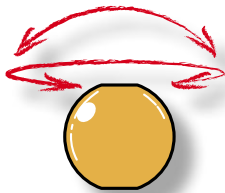


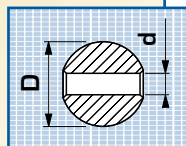
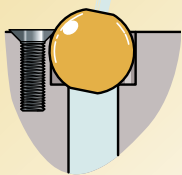
Buses orientables

En laiton



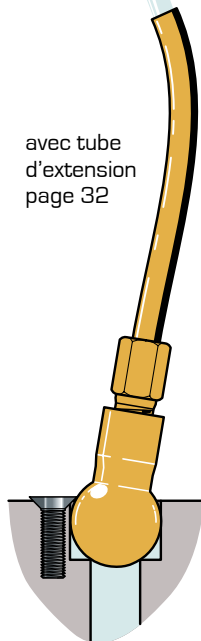
33 bar max

Buse à trou lisse Type BB

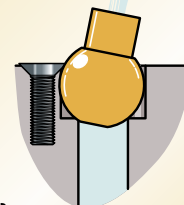
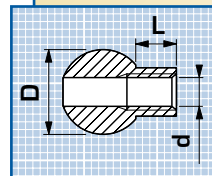


rotule (D)	jet (d)	Réf.
10 mm	2,8 mm	BB1004
10 mm	4 mm	BB1007
11 mm	2,8 mm	BB1014
11 mm	4 mm	BB1015
12 mm	4 mm	BB1024
12 mm	5,5 mm	BB1027
14 mm	4 mm	BB1037
14 mm	5,5 mm	BB1040
15 mm	4 mm	BB1049
15 mm	5,5 mm	BB1052
22 mm	4 mm	BB1071
22 mm	5,5 mm	BB1074
1/2"	4 mm	BB1083
1/2"	5,5 mm	BB1086
5/8"	4 mm	BB1107
5/8"	5,5 mm	BB1110

avec tube
d'extension
page 32



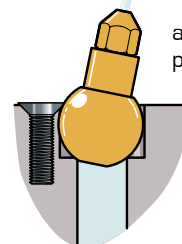
Buse à trou tarudé Type BB



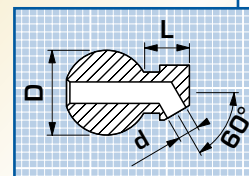
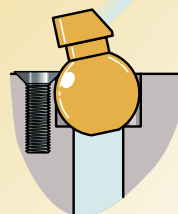
Ø jet (mm)

D	d	L	Réf.
10 mm	M 6	0	BB1001
11 mm	M 5	6	BB1016
12 mm	M 5	6	BB1018
14 mm	M 6	7,9	BB1031
15 mm	M 6	7,9	BB1043
22 mm	M 6	7,9	BB1065
1/2"	M 5	6	BB1077
5/8"	M 6	7,9	BB1101

avec gicleur
page 33



Buse à trou lisse jet d'angle Type BB



Ø jet (mm)

D	d	L	Réf.
10 mm	2,8	6,35	BB1012
11 mm	4	9,15	BB1017
12 mm	4	9,15	BB1021
14 mm	4	9,15	BB1034
15 mm	4	9,15	BB1046
22 mm	4	9,15	BB1068
1/2"	4	9,15	BB1080
5/8"	4	9,15	BB1104

- Température d'utilisation : 148°C maxi
- Rotule en laiton

